

## Using NFE and ETS to build your “house of learning”

In the previous sections we have already provided some definitions and descriptions of non-formal education and education through sport.

To make this even clearer and more tangible we are now going to build the „house of learning“, which is made of 9 building blocks that are typical features of both NFE and ETS.



## Using NFE and ETS to build your “house of learning”

NFE and ETS are built on a strong foundation of values. Learning objectives, learning methods and learning content may vary depending on the target group and context and may change over time.

The fundamental values however -such as human rights, democratic principles or sport-specific values such as fairness and sportsmanship- form a stable foundation for NFE and ETS and can thus also serve as orientation for teachers and learners.

### 1 - BASED ON VALUES

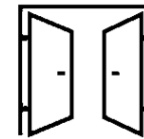
(HUMAN RIGHTS, DEMOCRACY + SPORT- AND EDUCATION SPECIFIC VALUES)

## Using NFE and ETS to build your “house of learning”

The second feature of NFE and ETS is their accessibility. Unlike other areas of education or sports, they are neither elitist nor selective. The doors to our house of learning are supposed to be open to all.

NFE and ETS are often more effective in reaching out to populations otherwise difficult to access (formal) education. This openness should also be reflected in the content and methods of NFE and ETS and educators should always ask themselves how THEY can make THEIR offerings more accessible.

2 - INCLUSIVE &



ACCESSIBLE

1 - BASED ON VALUES

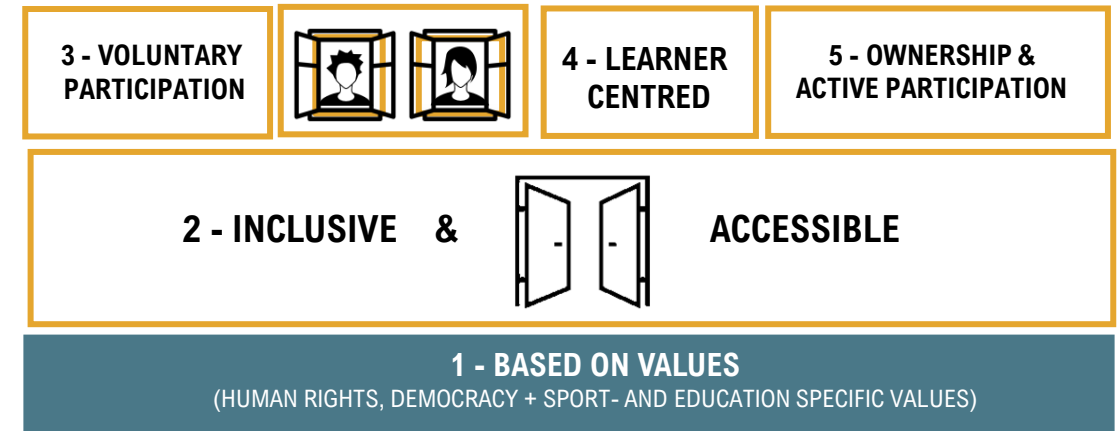
(HUMAN RIGHTS, DEMOCRACY + SPORT- AND EDUCATION SPECIFIC VALUES)

## Using NFE and ETS to build your “house of learning”

In order for NFE and ETS to become a real HOME of learning, the "residents" must feel that way.

Learners are therefore at the center of both of these educational approaches. They participate voluntarily in the learning opportunities, and they also actively contribute to designing them.

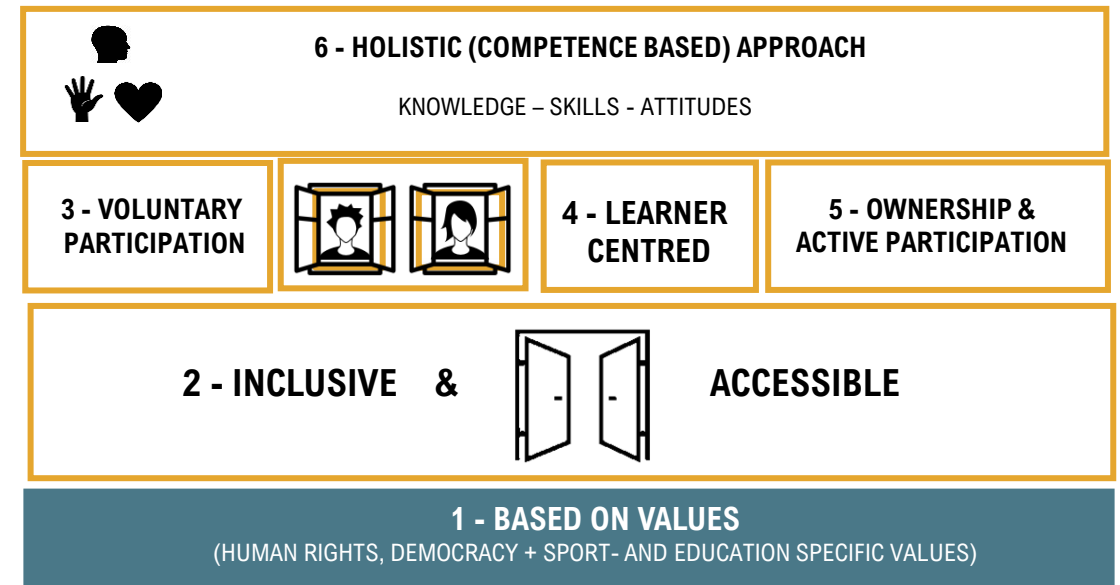
Thus, learning becomes their decision and their choice of action. However, taking ownership also means taking responsibility for one's own learning activities and learning success.



## Using NFE and ETS to build your “house of learning”

An important aspect for the attractiveness of NFE and ETS is their holistic approach. Knowledge skills and attitudes are taught, and the learning is done with head, heart and hand.

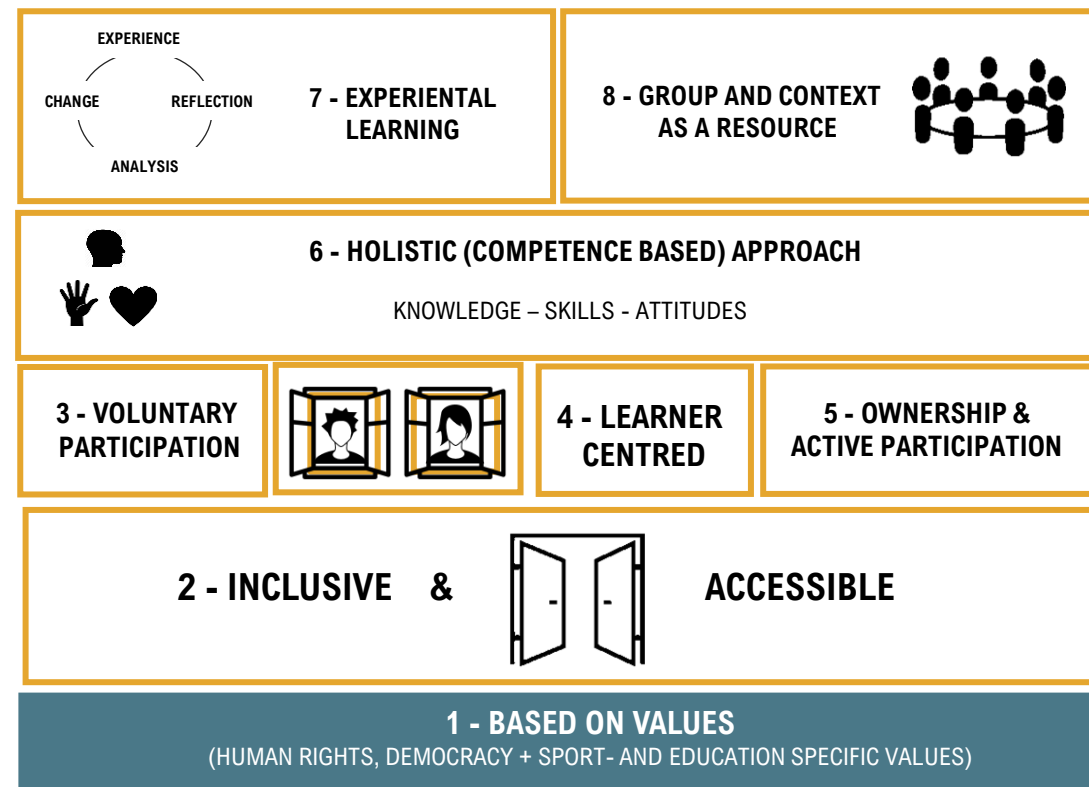
This is where sport as a learning environment has its particular strength, because in sport learning can take place with all the senses and because social processes also play such an important role.



## Using NFE and ETS to build your “house of learning”

On the fourth floor of our house, we find the methodology of NFE and ETS. Learning in these approaches is frequently based on random or specifically initiated experiences (experiential learning) and group processes (group as a resource).

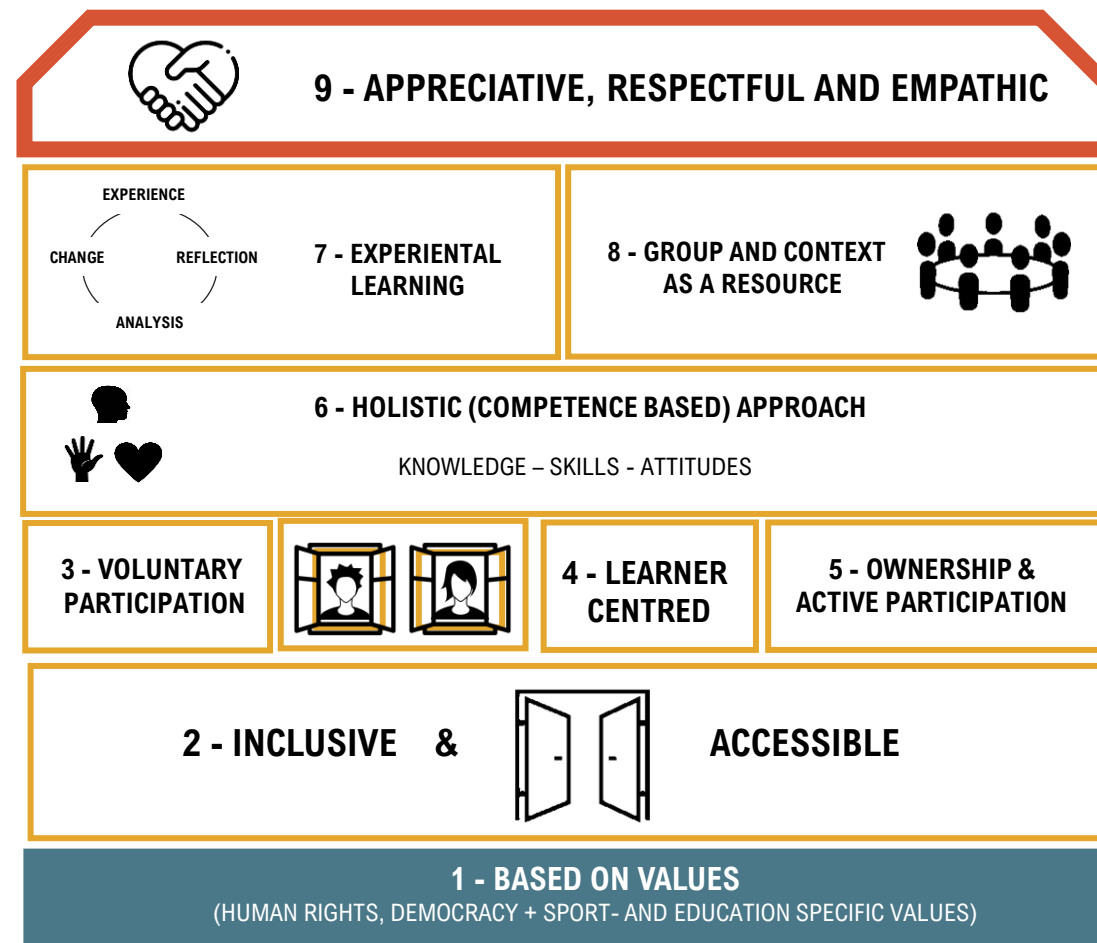
Teacher-led reflection on these process and support in transferring the respective learning to other areas of life is crucial there. Teachers should therefore place particular emphasis on this part of learning and education.



## Using NFE and ETS to build your “house of learning”

Last but not least, NFE and ETS are also characterized by a special way of treating each other.

Since it is usually not (only) about teaching factual knowledge or technical skills, but also about developing the learners' entire personality, NFE and ETF require empathy and mutual appreciation and respect from teachers and learners alike.



## Using NFE and ETS to build your “house of learning”

So now that we have build this “house of learning”, feel free to move in. As a teacher, as a learner or both....

